



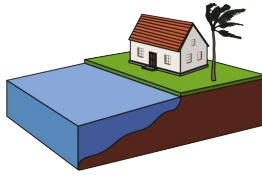
Hurricane Information

Understanding Hurricane Categories

CATEGORY 1

Dangerous

Winds • 74-95 mph



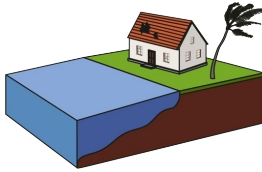
A Category 1 hurricane is the least potent storm. However, typical winds between 74-95 mph can create plenty of damage, such as uprooting smaller trees or snapping off branches.

Category 1 hurricanes will typically cause power outages due to downed power lines. These power outages may only last for a few hours but have been known to last up to several days, even weeks, depending on the scale of damage.

CATEGORY 2

Very Dangerous

Winds • 96-110 mph



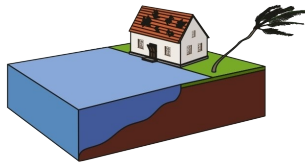
A Category 2 hurricane has wind speeds between 96-110 mph. These strong winds can cause moderate damage to your property while also producing road blockages due to fallen trees. Even a well-built house will most likely suffer some damage to the roof, gutters, and siding - which often loosen and detach from your home.

The most significant concern a Category 2 hurricane brings is the occurrence of flying debris. Branches, rocks, lawn decorations, and other more massive blunt objects can be thrown against your home with alarming force. Traditional windows and doors can suffer breaches, causing elements to enter your home's interior - including shattered pieces of glass.

CATEGORY 3

Devastating

Winds • 111-129 mph



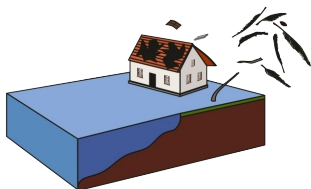
A Category 3 hurricane is a significant threat due to wind speeds ranging between 111-129 mph. These vicious gusts can rip a roof or deck right from your home. Power and water outages are frequent and can last for days due to the severity of the storm.

Flooding may also be a possibility, which can cause excessive damage to your foundation or ground floor. Traditional door frames are particularly at risk of warping and mold from this excess water intrusion.

CATEGORY 4

Catastrophic

Winds • 130-156 mph



A Category 4 hurricane can easily create massive destruction due to the wind speed ranging between 130-156 mph. These strong winds can often wholly tear the roof and siding from your house.

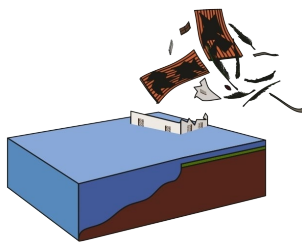
Large trees are also likely to be uprooted due to this massive storm. You can also expect power lines to come down, making it impossible to travel. The lasting impact of a Category 4 hurricane may cause severe delays in emergency personnel response and freeze a community's recovery for many months.

Having a dry, secure home is incredibly important to wait out these recovery efforts.

CATEGORY 5

Utter Catastrophic

Winds • 157 mph and more



A Category 5 hurricane is the most dangerous storm and almost always comes with an evacuation order. The catastrophic winds will reach a minimum of 157 mph and can level an entire home.

Many times the damaging impact of a Category 5 leaves residents homeless for many months due to structural damage. Significant damage to the roads and community infrastructure also exacerbate recovery efforts.

Always staying up to date with the latest news is critical in having enough time to evacuate to keep you and your family safe against these destructive hurricanes. Little can be done to safeguard a home from severe damage in the event of a storm of this magnitude.



Scan the QR Code to Download Preparation Lists for your Home, Basic Supplies, Food, First Aid and more.
rickcasehurricane.com

Make a Plan Now. Get Ready & Be Safe.